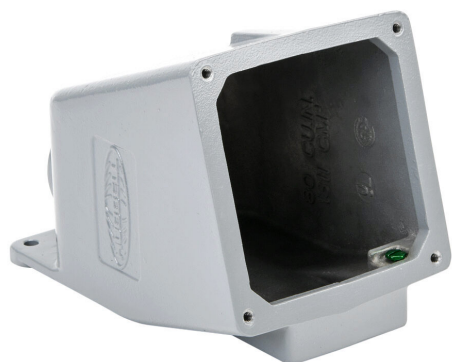


# BB602WA Cut Sheet



Bryant dead end back box, (1) 1-1/2in female NPT conduit entries, cast aluminum housing, gray. For use with Bryant 60A devices. Requires AP60 adapter plate.

For complete product information, please see this item on our store at the following link:



<https://www.automationdirect.com/pn/BB602WA>

---

## Technical Specifications

<b>Brand</b>	Bryant
<b>Item</b>	Back box
<b>Box Type</b>	Dead end
<b>Conduit Entry</b>	(1) 1-1/2in female NPT
<b>Housing Material</b>	Cast aluminum
<b>Color</b>	Gray
<b>For Use With</b>	Bryant 60A devices
<b>Requires</b>	AP60 adapter plate

---

## Agency Approvals

<b>UL Listed File #</b>	E31999
<b>CE</b>	<a href="#">View CE declarations</a>
<b>CSA File #</b>	N/A
<b>RoHS Status</b>	Yes (See CE Doc)
<b>EU REACH</b>	<a href="#">View EU REACH document</a>

---

## Dimensional Drawings



2D Drawing PDF Link:  
<https://cdn.automationdirect.com/static/drawings/2d/BB602WA.pdf>  
See store item page for other formats.