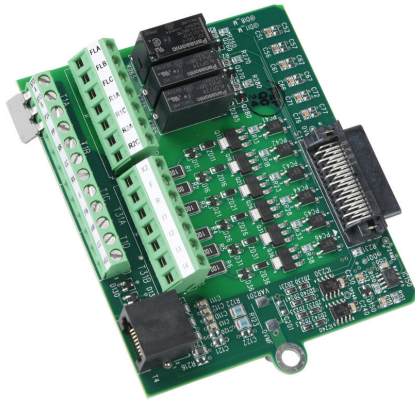


AS3-ACI Cut Sheet



Toshiba AS3 series relay/analog combo module, Analog Input: 3-channel, current/voltage, Analog Output: 2-channel, current/voltage, Discrete Input: 6-point, Discrete Output: 3-point, relay, (1) Form C (SPDT) relay, (2) Form A (SPST) relays.

For complete product information, please see this item on our store at the following link:



<https://www.automationdirect.com/pn/AS3-ACI>

Technical Specifications

Brand	Toshiba
Item	Combo module
I/O Module Type	Relay/analog
Series	AS3
Number of Analog Input Channels	3
Analog Input Signal Type	Current/voltage
Analog Input Type	Sinking and sourcing
Number of Non-Isolated Analog Input Commons	1
Number of Points per Analog Input Common	3
Input Resolution	11-bit
Input Current Signal Range	0-20 mA and 4-20 mA
Input Voltage Signal Range	0-10 VDC and +/- 10 VDC
Number of Analog Output Channels	2
Analog Output Signal Type	Current/voltage
Number of Non-Isolated Analog Output Commons	1
Number of Points per Analog Output Common	2
Output Resolution	10-bit
Output Current Signal Range	0-20 mA and 4-20 mA
Output Voltage Signal Range	0-10 VDC
Number of Discrete Input Points	6
Nominal Input Voltage	120 VAC
Number of Non-Isolated Discrete Input Commons	1
Number of Points per Discrete Input Common	6
Number of Discrete Output Points	3

Nominal Output Voltage	250 VAC/30 VDC
Discrete Output Type	Relay
Relay Configuration	(1) Form C (SPDT) relay, (2) Form A (SPST) relays
Number of Isolated Discrete Output Commons	3
Number of Points per Discrete Output Common	1
Load Current	2A/point relay
Communication Port and Connection Type(s)	(1) RS-485 (RJ45) port(s)
Port Protocol(s)	Modbus RTU Slave
Port Speed(s)	Up to 38.4k baud
Fuse Type	User-supplied external fuse
External Power Requirement	120 VAC
For Use With	Toshiba AS3 series AC drives
Additional Information	120 VAC replacement I/O board for 460 VAC Toshiba drives

AS3-ACI Cut Sheet

Agency Approvals

UL Listed File #	E204788
UL Recognized File #	None
UL Hazardous File #	None
CE	None
CSA File #	None
RoHS Status	No
EU REACH	View EU REACH document