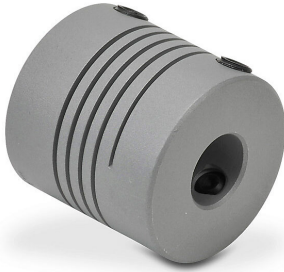


ARM-100-9525-9525D Cut Sheet



AutomationDirect encoder coupling, 3/8in bore, aluminum alloy body, setscrew. For use with Koyo TRDA-20 and TRDA-25 series encoders.

For complete product information, please see this item on our store at the following link:



<https://www.automationdirect.com/pn/ARM-100-9525-9525D>

Technical Specifications

Brand	AutomationDirect
Item	Encoder coupling
Bore	3/8in
Length	25.4mm
Body Material	Aluminum alloy
Attachment Style	Setscrew
For Use With	Koyo TRDA-20 and TRDA-25 series encoders

Agency Approvals

UL Listed File #	None
UL Recognized File #	None
UL Hazardous File #	None
CE	None
CSA File #	None
RoHS Status	No
EU REACH	View EU REACH document