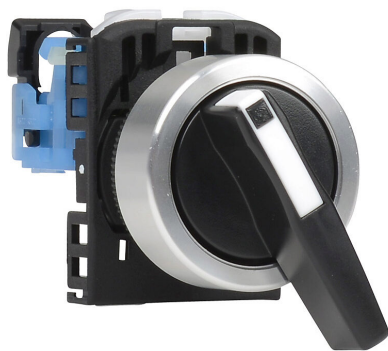


AR22WR-010BZA Cut Sheet



Fuji Electric selector switch, 22mm, 2-position, spring return from right, (1) N.O. contact(s), plastic base, metal bezel, Operator: black, lever, 30mm, round, plastic.

For complete product information, please see this item on our store at the following link:



<https://www.automationdirect.com/pn/AR22WR-010BZA>

Technical Specifications

Brand	Fuji Electric
Item	Selector switch
Barrel Size	22mm
IP Rating	IP65
Number Of Positions	2
Action	Spring return from right
Contact Type	(1) N.O.
Base Material	Plastic
Bezel Material	Metal
Operator Color	Black
Operator Type	Lever
Operator Size	30mm
Operator Shape	Round
Operator Material	Plastic

Agency Approvals

UL Listed File #	E44592
UL Recognized File #	None
UL Hazardous File #	None
CE	View CE declarations
CSA File #	LR20479
RoHS Status	Yes (See CE Doc)
EU REACH	View EU REACH document

Dimensional Drawings



2D Drawing PDF Link:
<https://cdn.automationdirect.com/static/drawings/AR22WR-010BZA.pdf>
See store item page for other formats.