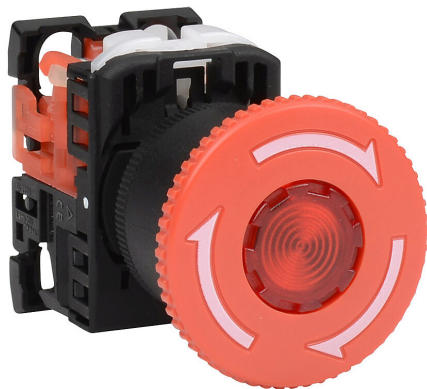


# AR22V5L-01E3R Cut Sheet



Fuji Electric pushbutton, 22mm, twist-to-release, LED illuminated, (1) N.C. contact(s), plastic base, plastic bezel, Operator: red, mushroom, 40mm, round, plastic, 24 VAC/VDC, full voltage.

For complete product information, please see this item on our store at the following link:



<https://www.automationdirect.com/pn/AR22V5L-01E3R>

## Technical Specifications

Brand	Fuji Electric
Item	Pushbutton
IP Rating	IP65
Barrel Size	22mm
Action	Twist-to-release
Bulb Type	LED illuminated
Contact Type	(1) N.C.
Base Material	Plastic

Bezel Material	Plastic
Operator Color	Red
Operator Type	Mushroom
Operator Size	40mm
Operator Shape	Round
Operator Material	Plastic
Voltage Rating	24 VAC/VDC
Voltage Regulation	Full voltage

## Agency Approvals

UL Listed File #	E44592
UL Recognized File #	None
UL Hazardous File #	None
CE	<a href="#">View CE declarations</a>
CSA File #	LR20479
RoHS Status	Yes (See CE Doc)
EU REACH	<a href="#">View EU REACH document</a>

## Dimensional Drawings



2D Drawing PDF Link:  
<https://cdn.automationdirect.com/static/drawings/AR22V5L-01E3R.pdf>  
See store item page for other formats.