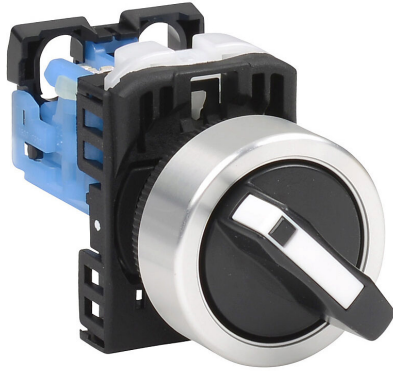


# AR22PR-210BZA Cut Sheet



Fuji Electric selector switch, 22mm, 2-position, maintained, (1) N.O. contact(s), plastic base, metal bezel, Operator: black, knob, 30mm, round, plastic.

For complete product information, please see this item on our store at the following link:



<https://www.automationdirect.com/pn/AR22PR-210BZA>

## Technical Specifications

<b>Brand</b>	Fuji Electric
<b>Item</b>	Selector switch
<b>Barrel Size</b>	22mm
<b>IP Rating</b>	IP65
<b>Number Of Positions</b>	2
<b>Action</b>	Maintained
<b>Contact Type</b>	(1) N.O.
<b>Base Material</b>	Plastic
<b>Bezel Material</b>	Metal
<b>Operator Color</b>	Black
<b>Operator Type</b>	Knob
<b>Operator Size</b>	30mm
<b>Operator Shape</b>	Round
<b>Operator Material</b>	Plastic

## Agency Approvals

<b>UL Listed File #</b>	E44592
<b>UL Recognized File #</b>	None
<b>UL Hazardous File #</b>	None
<b>CE</b>	<a href="#">View CE declarations</a>
<b>CSA File #</b>	LR20479
<b>RoHS Status</b>	Yes (See CE Doc)
<b>EU REACH</b>	<a href="#">View EU REACH document</a>

## Dimensional Drawings



2D Drawing PDF Link:  
<https://cdn.automationdirect.com/static/drawings/AR22PR-210BZA.pdf>  
See store item page for other formats.