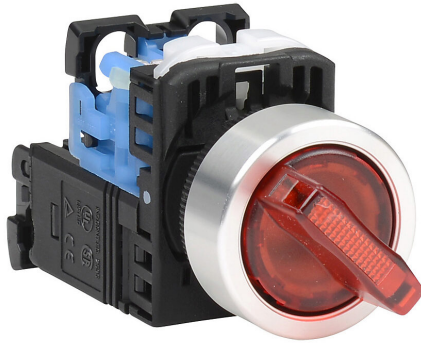


AR22PL-210L3RZA Cut Sheet



Fuji Electric selector switch, 22mm, 2-position, maintained, LED illuminated, (1) N.O. contact(s), plastic base, metal bezel, Operator: red, knob, 30mm, round, plastic, 115-127 VAC, transformer.

For complete product information, please see this item on our store at the following link:



<https://www.automationdirect.com/pn/AR22PL-210L3RZA>

Technical Specifications

Brand	Fuji Electric
Item	Selector switch
Barrel Size	22mm
IP Rating	IP65
Number Of Positions	2
Action	Maintained
Bulb Type	LED illuminated
Contact Type	(1) N.O.
Base Material	Plastic
Bezel Material	Metal
Operator Color	Red
Operator Type	Knob
Operator Size	30mm
Operator Shape	Round
Operator Material	Plastic
Voltage Rating	115-127 VAC
Voltage Regulation	Transformer

Agency Approvals

UL Listed File #	E44592
UL Recognized File #	None
UL Hazardous File #	None
CE	View CE declarations
CSA File #	LR20479
RoHS Status	Yes (See CE Doc)
EU REACH	View EU REACH document