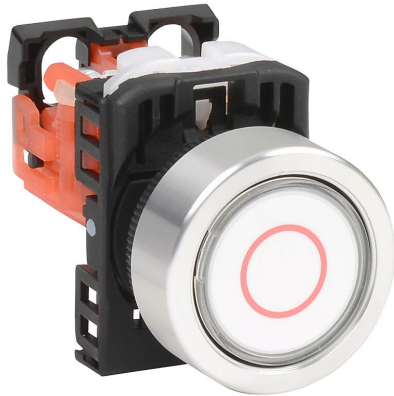


# AR22FAR-01C01ZA Cut Sheet



Fuji Electric pushbutton, 22mm, momentary, (1) N.C. contact(s), plastic base, metal bezel, Operator: white, flush, 30mm, round, plastic, operator text "(O)".

For complete product information, please see this item on our store at the following link:



<https://www.automationdirect.com/pn/AR22FAR-01C01ZA>

## Technical Specifications

<b>Brand</b>	Fuji Electric
<b>Item</b>	Pushbutton
<b>IP Rating</b>	IP65
<b>Barrel Size</b>	22mm
<b>Action</b>	Momentary
<b>Contact Type</b>	(1) N.C.
<b>Base Material</b>	Plastic
<b>Bezel Material</b>	Metal
<b>Operator Color</b>	White
<b>Operator Type</b>	Flush
<b>Operator Size</b>	30mm
<b>Operator Shape</b>	Round
<b>Operator Material</b>	Plastic
<b>Operator Legend</b>	(O)
<b>Text Color</b>	Red

## Agency Approvals

<b>UL Listed File #</b>	E44592
<b>UL Recognized File #</b>	None
<b>UL Hazardous File #</b>	None
<b>CE</b>	<a href="#">View CE declarations</a>
<b>CSA File #</b>	LR20479
<b>RoHS Status</b>	Yes (See CE Doc)
<b>EU REACH</b>	<a href="#">View EU REACH document</a>