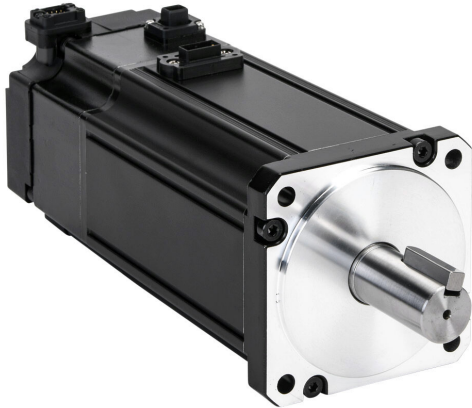


APMC-FCL10AYK2-AD Cut Sheet



LS Electric low inertia AC brushless servo motor, 1 kW, 3-phase input, 17-bit (131072 ppr) encoder, integrated brake. For use with LS Electric L7C L7CA010U-AD 1 kW drive.

For complete product information, please see this item on our store at the following link:



<https://www.automationdirect.com/pn/APMC-FCL10AYK2-AD>

Technical Specifications

| | |
|-------------------------------|---|
| Brand | LS Electric |
| Item | Servo motor |
| Performance Level | Low inertia |
| Voltage Type | AC |
| Motor Type | Brushless |
| Power Rating | 1 kW |
| Number of Input Phases | 3 |
| Rated Speed | 3000rpm |
| Maximum Speed | 5000rpm |
| Amperage Rating | 5.83A |
| Holding Torque Rating | 28.1 lb-in |
| Encoder Resolution | 17-bit (131072 ppr) |
| Integrated Brake | Yes |
| Motor Frame | 80mm |
| IP Rating | IP67 |
| Shaft Type | Single |
| Shaft Diameter | 19mm |
| Steps per Revolution | Up to 17-bit (131072 ppr) |
| For Use With | LS Electric L7C L7CA010U-AD 1 kW drive |
| Includes | Motor shaft key |
| Requires | LS Electric APCS-PxxxxLSC-AD power cables, APCS-ExxxxES-AD encoder cables and APCS-BxxxQS-AD brake cables |

Agency Approvals

| | |
|-----------------------------|--|
| UL Listed File # | None |
| UL Recognized File # | E255738 |
| UL Hazardous File # | None |
| CE | View CE declarations |
| CSA File # | None |
| RoHS Status | Yes (See CE Doc) |
| EU REACH | View EU REACH document |
| Other | RoHS Statement |