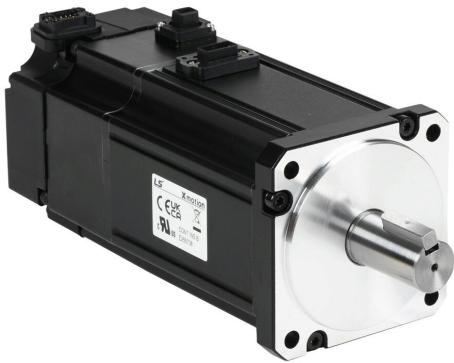


APMC-FCL08AMK2-AD Cut Sheet



LS Electric low inertia AC brushless servo motor, 750W, 3-phase input, 19-bit (524288 ppr) encoder, integrated brake. For use with LS Electric L7PA010U-AD 1 kW drive and iX7NHA008U-AD 750W drives.

For complete product information, please see this item on our store at the following link:



<https://www.automationdirect.com/pn/APMC-FCL08AMK2-AD>

Technical Specifications

Brand	LS Electric
Item	Servo motor
Performance Level	Low inertia
Voltage Type	AC
Motor Type	Brushless
Power Rating	750W
Number of Input Phases	3
Rated Speed	3000rpm
Maximum Speed	5000rpm
Amperage Rating	5.02A
Holding Torque Rating	21.2 lb-in
Encoder Resolution	19-bit (524288 ppr)

Integrated Brake	Yes
Motor Frame	80mm
IP Rating	IP67
Shaft Type	Single
Shaft Diameter	19mm
Steps per Revolution	Up to 19-bit (524288 ppr)
For Use With	LS Electric L7PA010U-AD 1 kW drive and iX7NHA008U-AD 750W drives
Includes	Motor shaft key
Requires	LS Electric APCS-PxxxxLS-AD power cables, APCS-ExxxxES1-AD encoder cables and APCS-BxxxxQS-AD brake cables

Agency Approvals

UL Listed File #	E255738
UL Recognized File #	None
UL Hazardous File #	None
CE	View CE declarations
CSA File #	None
RoHS Status	Yes (See CE Doc)
EU REACH	View EU REACH document

Dimensional Drawings



2D Drawing PDF Link:
<https://cdn.automationdirect.com/static/drawings/2d/APMC-FCL08AMK2-AD.pdf>
See store item page for other formats.