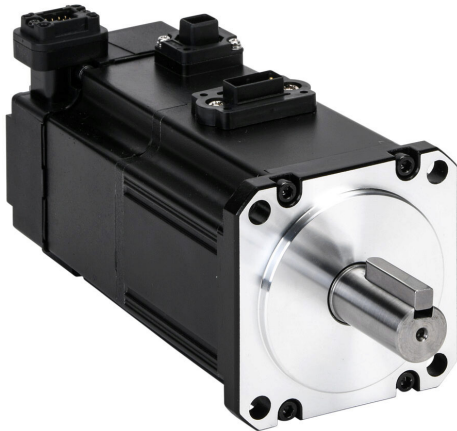


APMC-FBL02AYK2-AD Cut Sheet



LS Electric low inertia AC brushless servo motor, 200W, 3-phase input, 17-bit (131072 ppr) encoder, integrated brake. For use with LS Electric L7C L7CA004U-AD 400W drive.

For complete product information, please see this item on our store at the following link:



<https://www.automationdirect.com/pn/APMC-FBL02AYK2-AD>

Technical Specifications

Brand	LS Electric
Item	Servo motor
Performance Level	Low inertia
Voltage Type	AC
Motor Type	Brushless
Power Rating	200W
Number of Input Phases	3
Rated Speed	3000rpm
Maximum Speed	5000rpm
Amperage Rating	1.45A
Holding Torque Rating	5.7 lb-in
Encoder Resolution	17-bit (131072 ppr)

Integrated Brake	Yes
Motor Frame	60mm
IP Rating	IP67
Shaft Type	Single
Shaft Diameter	14mm
Steps per Revolution	Up to 17-bit (131072 ppr)
For Use With	LS Electric L7C L7CA004U-AD 400W drive
Includes	Motor shaft key
Requires	LS Electric APCS-PxxxxLSC-AD power cables, APCS-ExxxxES-AD encoder cables and APCS-BxxxQS-AD brake cables

Agency Approvals

UL Listed File #	None
UL Recognized File #	E255738
UL Hazardous File #	None
CE	View CE declarations
CSA File #	None
RoHS Status	Yes (See CE Doc)
EU REACH	View EU REACH document
Other	RoHS Statement

Dimensional Drawings



2D Drawing PDF Link:
<https://cdn.automationdirect.com/static/drawings/2d/APMC-FBL02AYK2-AD.pdf>
See store item page for other formats.