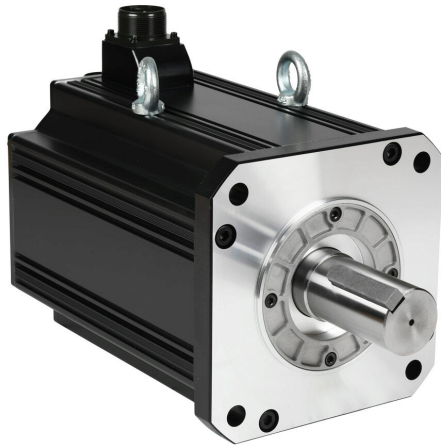


# APM-FFP75DMK-AD Cut Sheet



LS Electric medium inertia AC brushless servo motor, 7.5 kW, 3-phase input, 19-bit (524288 ppr) encoder. For use with LS Electric L7PB075U-AD 7.5 kW drive.

For complete product information, please see this item on our store at the following link:



<https://www.automationdirect.com/pn/APM-FFP75DMK-AD>

## Technical Specifications

<b>Brand</b>	LS Electric
<b>Item</b>	Servo motor
<b>Performance Level</b>	Medium inertia
<b>Voltage Type</b>	AC
<b>Motor Type</b>	Brushless
<b>Power Rating</b>	7.5 kW
<b>Number of Input Phases</b>	3
<b>Rated Speed</b>	2000rpm
<b>Maximum Speed</b>	2500rpm
<b>Amperage Rating</b>	18.97A
<b>Holding Torque Rating</b>	317 lb-in

<b>Encoder Resolution</b>	19-bit (524288 ppr)
<b>Integrated Brake</b>	No
<b>Motor Frame</b>	180mm
<b>IP Rating</b>	IP65
<b>Shaft Type</b>	Single
<b>Shaft Diameter</b>	42mm
<b>Steps per Revolution</b>	Up to 19-bit (524288 ppr)
<b>For Use With</b>	LS Electric L7PB075U-AD 7.5 kW drive
<b>Includes</b>	Motor shaft key
<b>Requires</b>	LS Electric APCS-PxxxxJS1-AD power cables and APCS-ExxxxDS1-AD encoder cables

## Agency Approvals

<b>UL Listed File #</b>	E255738
<b>UL Recognized File #</b>	None
<b>UL Hazardous File #</b>	None
<b>CE</b>	<a href="#">View CE declarations</a>
<b>CSA File #</b>	None
<b>RoHS Status</b>	Yes (See CE Doc)
<b>EU REACH</b>	<a href="#">View EU REACH document</a>

## Dimensional Drawings



2D Drawing PDF Link:  
<https://cdn.automationdirect.com/static/drawings/2d/APM-FFP75DMK-AD.pdf>  
See store item page for other formats.