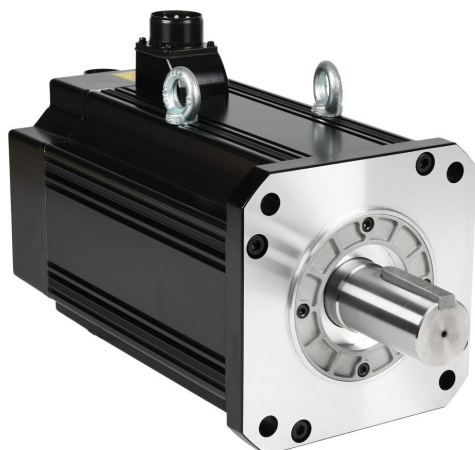


APM-FF75DMK2-AD Cut Sheet



LS Electric medium inertia AC brushless servo motor, 7.5 kW, 3-phase input, 19-bit (524288 ppr) encoder, integrated brake. For use with LS Electric L7PA075U-AD 7.5 kW drive.

For complete product information, please see this item on our store at the following link:



<https://www.automationdirect.com/pn/APM-FF75DMK2-AD>

Technical Specifications

Brand	LS Electric
Item	Servo motor
Performance Level	Medium inertia
Voltage Type	AC
Motor Type	Brushless
Power Rating	7.5 kW
Number of Input Phases	3
Rated Speed	2000rpm
Maximum Speed	2500rpm
Amperage Rating	32.95A
Holding Torque Rating	317 lb-in

Encoder Resolution	19-bit (524288 ppr)
Integrated Brake	Yes
Motor Frame	180mm
IP Rating	IP65
Shaft Type	Single
Shaft Diameter	42mm
Steps per Revolution	Up to 19-bit (524288 ppr)
For Use With	LS Electric L7PA075U-AD 7.5 kW drive
Includes	Motor shaft key
Requires	LS Electric APCS-PxxxxLB2-AD power cables and APCS-ExxxxDS1-AD encoder cables

Agency Approvals

UL Listed File #	E255738
UL Recognized File #	None
UL Hazardous File #	None
CE	View CE declarations
CSA File #	None
RoHS Status	Yes (See CE Doc)
EU REACH	View EU REACH document

Dimensional Drawings



2D Drawing PDF Link:
<https://cdn.automationdirect.com/static/drawings/2d/APM-FF75DMK2-AD.pdf>
See store item page for other formats.