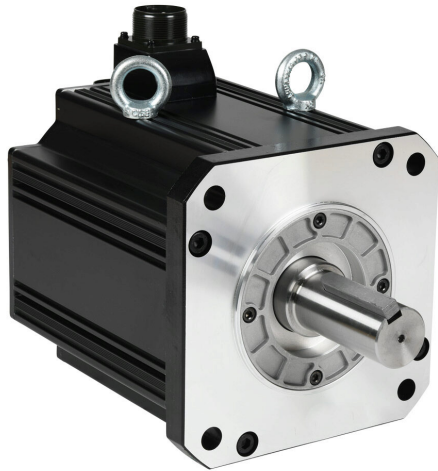


APM-FF55DMK-AD Cut Sheet



LS Electric medium inertia AC brushless servo motor, 5.5 kW, 3-phase input, 19-bit (524288 ppr) encoder. For use with LS Electric L7PA050U-AD 5 kW drive.

For complete product information, please see this item on our store at the following link:



<https://www.automationdirect.com/pn/APM-FF55DMK-AD>

Technical Specifications

Brand	LS Electric	Encoder Resolution	19-bit (524288 ppr)
Item	Servo motor	Integrated Brake	No
Performance Level	Medium inertia	Motor Frame	180mm
Voltage Type	AC	IP Rating	IP65
Motor Type	Brushless	Shaft Type	Single
Power Rating	5.5 kW	Shaft Diameter	35mm
Number of Input Phases	3	Steps per Revolution	Up to 19-bit (524288 ppr)
Rated Speed	2000rpm	For Use With	LS Electric L7PA050U-AD 5 kW drive
Maximum Speed	3000rpm	Includes	Motor shaft key
Amperage Rating	28.78A	Requires	LS Electric APCS-PxxxxJS-AD power cables and APCS-ExxxxDS1-AD encoder cables
Holding Torque Rating	232.3 lb-in		

Agency Approvals

UL Listed File #	E255738
UL Recognized File #	None
UL Hazardous File #	None
CE	View CE declarations
CSA File #	None
RoHS Status	Yes (See CE Doc)
EU REACH	View EU REACH document

Dimensional Drawings



2D Drawing PDF Link:
<https://cdn.automationdirect.com/static/drawings/2d/APM-FF55DMK-AD.pdf>
See store item page for other formats.