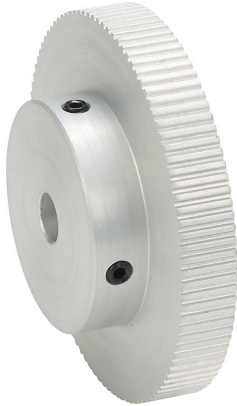


APB100MXL025B-312 Cut Sheet



SureMotion timing pulley, aluminum, 0.08in MXL pitch, 100 tooth, 2.546in pitch diameter, 5/16in bore, hub without flanges. For use with 1/4in wide belt.

For complete product information, please see this item on our store at the following link:



<https://www.automationdirect.com/pn/APB100MXL025B-312>

Technical Specifications

Brand	SureMotion
Item	Timing pulley
Material	Aluminum
Pitch	0.08in MXL
Number of Teeth	100
Pitch Diameter	2.546in
Bore Diameter	5/16in
Pulley Type	Hub without flanges
Mounting Type	Smooth bore with set screws
For Use With	1/4in wide belt

Agency Approvals

UL Listed File #	None
UL Recognized File #	None
UL Hazardous File #	None
CE	None
CSA File #	None
RoHS Status	No
EU REACH	View EU REACH document