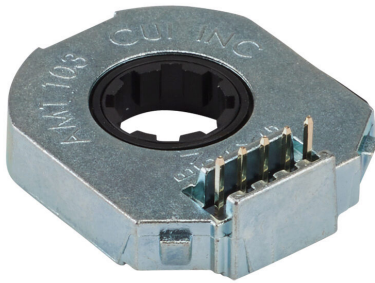


AMT103-V Cut Sheet



CUI Devices AMT10 series incremental (quadrature) rotary modular kit encoder, 5 VDC, axial exit, push-pull (totem) output, up to 2048 ppr, dipswitch configurable. For use with NEMA 14, 17, and 23 dual shaft motors.

For complete product information, please see this item on our store at the following link:



<https://www.automationdirect.com/pn/AMT103-V>

Technical Specifications

Brand	CUI Devices	Frequency Response	Greater than 100 kHz
Item	Modular kit encoder	Speed Rating	7500/15000rpm
Series	AMT10	Flange Mount	No
Feedback Type	Incremental (quadrature)	Encoder Body Diameter	29mm
Encoder Type	Rotary	Housing Material	Metal
Replacement	No	IP Rating	IP20
Duty Rating	Light duty	Connector Type	5-pin male
Voltage Rating	5 VDC	For Use With	NEMA 14, 17, and 23 dual shaft motors
Exit Orientation	Axial	Kit Includes	(1) encoder module, (1) encoder standard base, (1) centering tool, (1) spacer tool, (1) shaft adapter and (9) shaft sleeves (2, 3, 4, 5, 6 and 8mm, 1/8, 3/16 and 1/4in)
Encoder Output Type	Push-pull (totem)	Requires	CUI-435-xxx or CUI-3934-6FT encoder cable
Encoder Resolution	Up to 2048 ppr		
Configuration	Dipswitch		
Shaft Type	Hollow		
Shaft Diameter	2mm, 3mm, 1/8in, 4mm, 3/16in, 5mm, 6mm, 1/4in and 8mm		

Agency Approvals

UL Listed File #	None
UL Recognized File #	None
UL Hazardous File #	None
CE	None
CSA File #	None
RoHS Status	Yes (See CE Doc)
EU REACH	View EU REACH document
Other	RoHS Statement