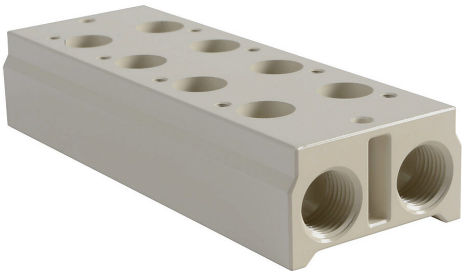


# AM-334 Cut Sheet



NITRA pneumatic valve manifold, aluminum, off-white, (4) stations, (2) 3/8in female NPT inlet(s), (2) 3/8in female NPT exhaust(s). For use with AVS-33 series directional control valves.

For complete product information, please see this item on our store at the following link:



<https://www.automationdirect.com/pn/AM-334>

## Technical Specifications

|                    |  |
|--------------------|--|
| Brand              | NITRA                                    |
| Item               | Valve manifold                           |
| Working Fluid      | Air or inert gas                         |
| Material           | Aluminum                                 |
| Color              | Off-white                                |
| Number of Stations | 4  |
| Inlet Port         | (2) 3/8in female NPT                     |
| Exhaust Port       | (2) 3/8in female NPT                     |
| For Use With       | AVS-33 series directional control valves |
| Includes           | Mounting hardware and gaskets            |

## Agency Approvals

|                      |  |
|----------------------|--|
| UL Listed File #     | None                                   |
| UL Recognized File # | None                                   |
| UL Hazardous File #  | None                                   |
| CE                   | None                                   |
| CSA File #           | None                                   |
| RoHS Status          | No                                     |
| EU REACH             | <a href="#">View EU REACH document</a> |

## Dimensional Drawings



2D Drawing PDF Link:  
<https://cdn.automationdirect.com/static/drawings/AM-334.pdf>  
See store item page for other formats.