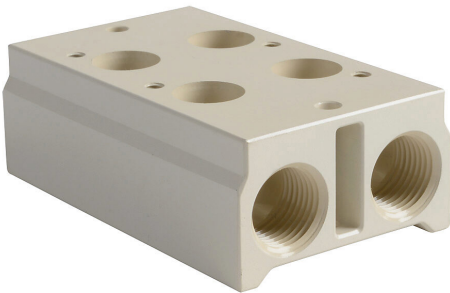


# AM-332 Cut Sheet



NITRA pneumatic valve manifold, aluminum, (2) stations, (2) 3/8in female NPT inlet(s), (2) 3/8in female NPT exhaust(s). For use with AVS-33 series directional control valves.

For complete product information, please see this item on our store at the following link:



<https://www.automationdirect.com/pn/AM-332>

## Technical Specifications

Brand	NITRA
Item	Pneumatic Valve manifold
Material	Aluminum
Number of Stations	2
Inlet Port	(2) 3/8in female NPT
Exhaust Port	(2) 3/8in female NPT
For Use With	AVS-33 series directional control valves
Includes	Mounting hardware and gaskets

## Agency Approvals

UL Listed File #	None
UL Recognized File #	None
UL Hazardous File #	None
CE	None
CSA File #	None
RoHS Status	No
EU REACH	<a href="#">View EU REACH document</a>