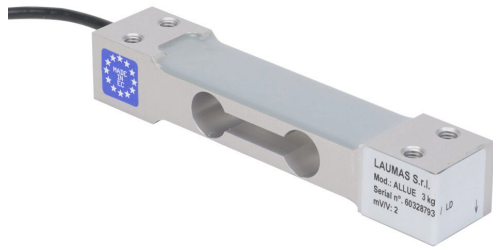


ALLUE3 Cut Sheet



Laumas single point load cell, 6.6 lb/3 kg, $\pm 0.02\%$ of full scale accuracy, voltage signal range(s) of 2 mV/V, 3–15 VDC, anodized aluminum alloy, IP65, (4) M6 threaded, 1.6ft/0.5m integral 4-wire shielded cable.

For complete product information, please see this item on our store at the following link:



<https://www.automationdirect.com/pn/ALLUE3>

Technical Specifications

Brand	Laumas
Item	Load cell
Sensor Type	Single point
Application	Platforms, scales, hoppers, filling and batching
Load Rating	6.6 lb/3 kg
Accuracy	$\pm 0.02\%$ of full scale
Output Voltage Signal Range	2 mV/V
Operating Voltage	3–15 VDC
Operating Temperature	-30 to +85 °C
Material	Anodized aluminum alloy
IP Rating	IP65
Mounting Hole Size	(4) M6 threaded
Electrical Connection	1.6ft/0.5m integral 4-wire shielded cable

Agency Approvals

UL Listed File #	None
UL Recognized File #	None
UL Hazardous File #	None
CE	View CE declarations
CSA File #	None
RoHS Status	Yes (See CE Doc)
EU REACH	View EU REACH document

Dimensional Drawings



2D Drawing PDF Link:
<https://cdn.automationdirect.com/static/drawings/2d/ALLUE3.pdf>
See store item page for other formats.