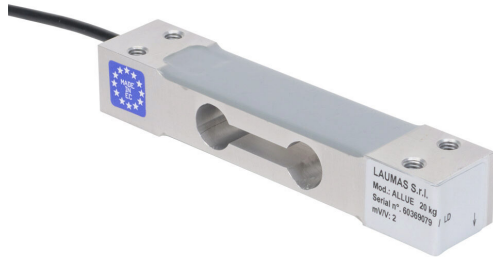


# ALLUE20 Cut Sheet



Laumas single point load cell, 44 lb/20 kg,  $\pm 0.02\%$  of full scale accuracy, voltage signal range(s) of 2 mV/V, 3–15 VDC, anodized aluminum alloy, IP65, (4) M6 threaded, 1.6ft/0.5m integral 4-wire shielded cable.

For complete product information, please see this item on our store at the following link:



<https://www.automationdirect.com/pn/ALLUE20>

## Technical Specifications

<b>Brand</b>	Laumas
<b>Item</b>	Load cell
<b>Sensor Type</b>	Single point
<b>Application</b>	Platforms, scales, hoppers, filling and batching
<b>Load Rating</b>	44 lb/20 kg
<b>Accuracy</b>	$\pm 0.02\%$ of full scale
<b>Output Voltage Signal Range</b>	2 mV/V
<b>Operating Voltage</b>	3–15 VDC
<b>Operating Temperature</b>	-30 to +85 °C
<b>Material</b>	Anodized aluminum alloy
<b>IP Rating</b>	IP65
<b>Mounting Hole Size</b>	(4) M6 threaded
<b>Electrical Connection</b>	1.6ft/0.5m integral 4-wire shielded cable

## Agency Approvals

<b>UL Listed File #</b>	None
<b>UL Recognized File #</b>	None
<b>UL Hazardous File #</b>	None
<b>CE</b>	<a href="#">View CE declarations</a>
<b>CSA File #</b>	None
<b>RoHS Status</b>	Yes (See CE Doc)
<b>EU REACH</b>	<a href="#">View EU REACH document</a>

## Dimensional Drawings



2D Drawing PDF Link:  
<https://cdn.automationdirect.com/static/drawings/2d/ALLUE20.pdf>  
See store item page for other formats.