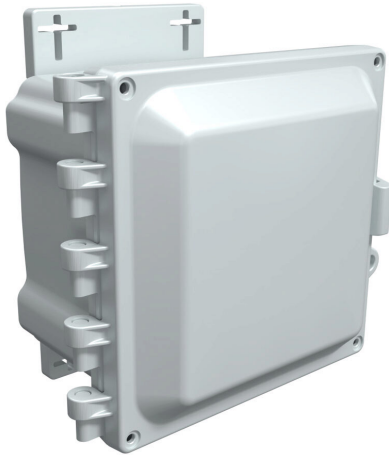


AHF664 Cut Sheet



AttaBox Heartland series enclosure, NEMA 1/3R/4/4X/12, 6 x 6 x 4in (HxWxD), wall mount, polycarbonate, Pantone 7541 C light gray, single-door, polycarbonate quick-release latch.

For complete product information, please see this item on our store at the following link:



<https://www.automationdirect.com/pn/AHF664>

Technical Specifications

Brand	AttaBox
Item	Enclosure
Series	Heartland
Subpanel	Purchase subpanel separately
Slope Top	No
3-Piece Assembly	No
Vented	No
NEMA Rating	1/3R/4/4X/12
IP Rating	IP66
Nominal Enclosure Dimensions	6 x 6 x 4in (HxWxD)
Enclosure Height	7.40in
Enclosure Width	7.41in
Enclosure Depth	5.35in
Mounting	Wall

Integral Mounting Feet	No
Integral Mounting Flange	No
Dual Access	No
Knockouts	No
Bottom Gland Plate	No
Material	Polycarbonate
Color	Pantone 7541 C light gray
Cover Type	Single-door
Latch Type	Polycarbonate quick-release latch
Number Of Latches	1
Padlockable	Yes
Keylocking	No
Includes	Mounting flanges and hardware

Agency Approvals

UL Listed File #	E319779
UL Recognized File #	None
UL Hazardous File #	None
CE	View CE declarations
CSA File #	None
RoHS Status	Yes (See CE Doc)
EU REACH	View EU REACH document

Dimensional Drawings



2D Drawing PDF Link:
<https://cdn.automationdirect.com/static/drawings/2d/AHF664.pdf>
See store item page for other formats.