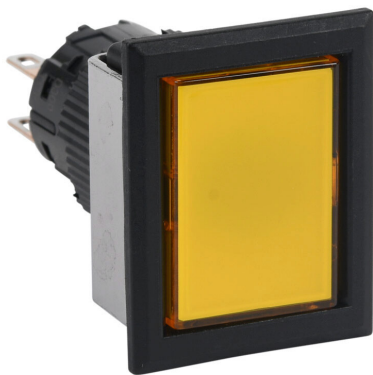


# AF16F0T-C2Y Cut Sheet



Fuji Electric pushbutton, IP65, 16mm, momentary, DPDT contact(s), plastic base, plastic bezel, black, Operator: yellow, flush, 28mm, rectangular, plastic.

For complete product information, please see this item on our store at the following link:



<https://www.automationdirect.com/pn/AF16F0T-C2Y>

## Technical Specifications

Brand	Fuji Electric
Item	Pushbutton
IP Rating	IP65
Barrel Size	16mm
Action	Momentary
Contact Type	DPDT
Base Material	Plastic
Bezel Material	Plastic
Bezel Color	Black
Operator Color	Yellow
Operator Type	Flush
Operator Size	28mm
Operator Shape	Rectangular
Operator Material	Plastic

## Agency Approvals

UL Listed File #	None
UL Recognized File #	E44592
UL Hazardous File #	None
CE	<a href="#">View CE declarations</a>
CSA File #	None
RoHS Status	Yes (See CE Doc)
EU REACH	<a href="#">View EU REACH document</a>

## Dimensional Drawings



2D Drawing PDF Link:  
<https://cdn.automationdirect.com/static/drawings/2d/AF16F0T-C2Y.pdf>  
See store item page for other formats.