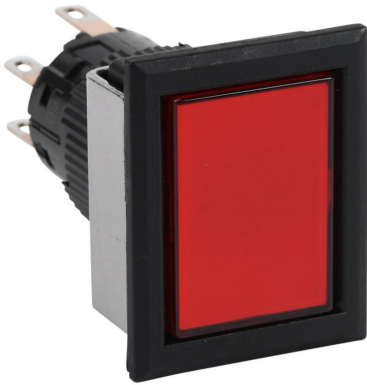


AF16F0N-C2E3R Cut Sheet



Fuji Electric pushbutton, IP65, 16mm, momentary, LED illuminated, DPDT contact(s), plastic base, plastic bezel, black, Operator: red, flush, 28mm, rectangular, plastic, 24 VAC/VDC, full voltage.

For complete product information, please see this item on our store at the following link:



<https://www.automationdirect.com/pn/AF16F0N-C2E3R>

Technical Specifications

Brand	Fuji Electric
Item	Pushbutton
IP Rating	IP65
Barrel Size	16mm
Action	Momentary
Bulb Type	LED illuminated
Contact Type	DPDT
Base Material	Plastic
Bezel Material	Plastic
Bezel Color	Black
Operator Color	Red
Operator Type	Flush
Operator Size	28mm
Operator Shape	Rectangular
Operator Material	Plastic
Voltage Rating	24 VAC/VDC
Voltage Regulation	Full voltage

Agency Approvals

UL Listed File #	None
UL Recognized File #	E44592
UL Hazardous File #	None
CE	View CE declarations
CSA File #	None
RoHS Status	Yes (See CE Doc)
EU REACH	View EU REACH document