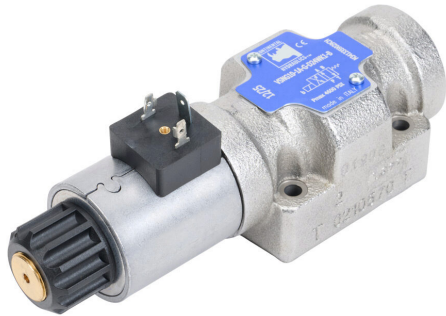


# AD05006 Cut Sheet



Continental hydraulic solenoid valve, D05, 4-port (4-way), 2-position, single solenoid spring return, cast iron body, momentary manual override, 33 GPM, 24 VDC, 31W, 18mm DIN style wiring plug.

For complete product information, please see this item on our store at the following link:



<https://www.automationdirect.com/pn/AD05006>

## Technical Specifications

<b>Brand</b>	Continental
<b>Item</b>	Valve
<b>Working Fluid</b>	Petroleum based hydraulic fluid
<b>Valve Type</b>	Solenoid directional control
<b>Port Quantity</b>	4-port (4-way)
<b>Number Of Positions</b>	2
<b>Action</b>	Single solenoid spring return
<b>Body Material</b>	Cast iron
<b>Seal Material</b>	Viton
<b>Mounting</b>	Subplate or manifold
<b>Manual Override Type</b>	Momentary

<b>Flow Capacity</b>	33 GPM
<b>Maximum Operating Pressure</b>	4600 psi
<b>Minimum Operating Pressure</b>	0 psi
<b>Working Fluid Temperature</b>	-4 to +176 °F
<b>Operating Voltage</b>	24 VDC
<b>Power Rating</b>	31W
<b>Electrical Connection</b>	18mm DIN style wiring plug
<b>Form Factor</b>	D05
<b>Includes</b>	O-rings and mounting hardware
<b>Manufacturer Part Number</b>	VSNG10-1A-G-D24WK1

## Agency Approvals

<b>UL Listed File #</b>	None
<b>UL Recognized File #</b>	None
<b>UL Hazardous File #</b>	None
<b>CE</b>	<a href="#">View CE declarations</a>
<b>CSA File #</b>	None
<b>RoHS Status</b>	Yes (See CE Doc)
<b>EU REACH</b>	<a href="#">View EU REACH document</a>

## Dimensional Drawings



2D Drawing PDF Link:  
<https://cdn.automationdirect.com/static/drawings/2d/AD05006.pdf>  
See store item page for other formats.