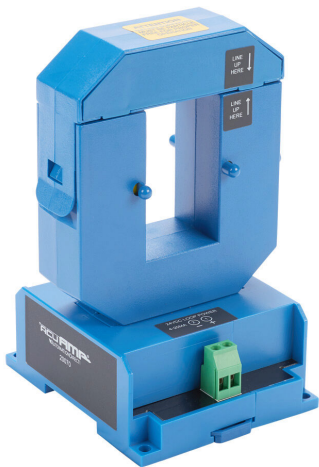


ACTR400-42L-S Cut Sheet



AcuAMP AC current transducer, 1-phase, split core, 0-400A sensing range, True RMS, 4-20 mA output.

For complete product information, please see this item on our store at the following link:



<https://www.automationdirect.com/pn/ACTR400-42L-S>

Technical Specifications

Brand	AcuAMP
Item	Current transducer
Voltage Type	AC
Number of Phases	1
Body Type	Split core
Sensing Range	0-400A
True RMS	Yes
Output	4-20 mA
Operating Voltage	24 VDC
Mounting	Panel or 35mm DIN rail
Electrical Connection	Screw terminals
UL Rating	UL 508 listed

Agency Approvals

UL Listed File #	E197592
UL Recognized File #	None
UL Hazardous File #	None
CE	View CE declarations
CSA File #	None
RoHS Status	Yes (See CE Doc)
EU REACH	View EU REACH document

Dimensional Drawings



2D Drawing PDF Link:
<https://cdn.automationdirect.com/static/drawings/ACTR400-42L-S.pdf>
See store item page for other formats.