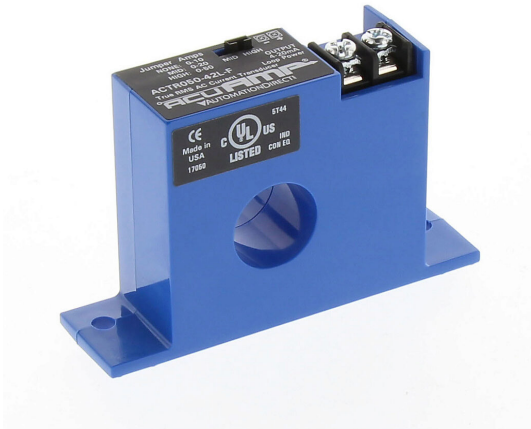


ACTR050-42L-F Cut Sheet



AcuAMP AC current transducer, 1-phase, fixed core, 0-10, 0-20, or 0-50A selectable sensing range, True RMS, 4-20 mA output.

For complete product information, please see this item on our store at the following link:



<https://www.automationdirect.com/pn/ACTR050-42L-F>

Technical Specifications

Brand	AcuAMP
Item	Current transducer
Voltage Type	AC
Number of Phases	1
Body Type	Fixed core
Sensing Range	0-10, 0-20, or 0-50A selectable
True RMS	Yes
Output	4-20 mA
Operating Voltage	24 VDC
Mounting	Panel or optional 35mm DIN rail
Electrical Connection	Screw terminals
UL Rating	UL 508 listed

Agency Approvals

UL Listed File #	E222847
UL Recognized File #	None
UL Hazardous File #	None
CE	View CE declarations
RoHS Status	Yes (See CE Doc)
EU REACH	View EU REACH document