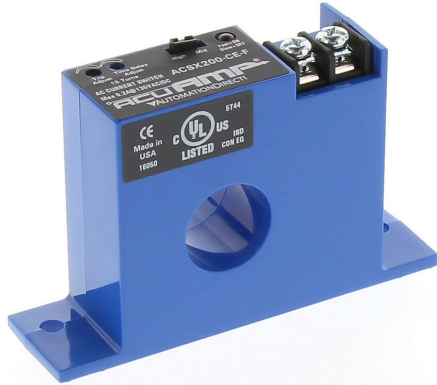


ACSX200-CE-F Cut Sheet



AcuAMP AC current switch, fixed core, 1.5-12, 12-55, or 55-175A selectable sensing range, 1.5-175A adjustable trip point, 15-turn potentiometer, solid state switch, N.C., adjustable time delay output, 0.2A @ 135 VAC/VDC output rating.

For complete product information, please see this item on our store at the following link:



<https://www.automationdirect.com/pn/ACSX200-CE-F>

Technical Specifications

Brand	AcuAMP
Item	AC Current switch
Body Type	Fixed core
Sensing Range	1.5-12, 12-55, or 55-175A selectable
True RMS	No
Trip Point	1.5-175A adjustable
Trip Point Adjustment	15-turn potentiometer
Output	Solid state switch, N.C., adjustable time delay
Output Rating	0.2A @ 135 VAC/VDC
Operating Voltage	Self powered
Mounting	Panel or optional 35mm DIN rail
Electrical Connection	Screw terminals
UL Rating	UL 508 listed

Agency Approvals

UL Listed File #	E222847
UL Recognized File #	None
UL Hazardous File #	None
CE	View CE declarations
RoHS Status	Yes (See CE Doc)
EU REACH	View EU REACH document