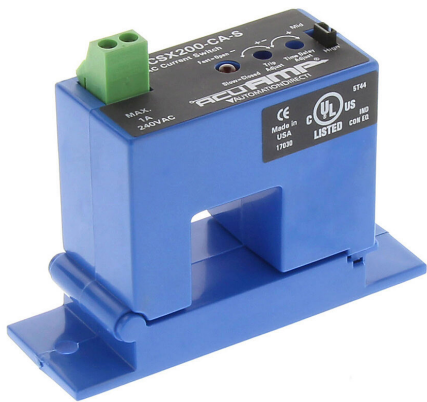


# ACSX200-CA-S Cut Sheet



AcuAMP AC current switch, split core, 2-12, 12-55, or 55-200A selectable sensing range, 2-200A adjustable trip point, 4-turn potentiometer, solid state switch, N.C., adjustable time delay output, 1A @ 240 VAC output rating.

For complete product information, please see this item on our store at the following link:



<https://www.automationdirect.com/pn/ACSX200-CA-S>

## Technical Specifications

Brand	AcuAMP
Item	Current switch
Voltage Type	AC
Body Type	Split core
Sensing Range	2-12, 12-55, or 55-200A selectable
True RMS	No
Trip Point	2-200A adjustable
Trip Point Adjustment	4-turn potentiometer
Output	Solid state switch, N.C., adjustable time delay
Output Rating	1A @ 240 VAC
Operating Voltage	Self powered
Mounting	Panel or optional 35mm DIN rail
Electrical Connection	Screw terminals
UL Rating	UL 508 listed

## Agency Approvals

UL Listed File #	E222847
UL Recognized File #	None
UL Hazardous File #	None
CE	<a href="#">View CE declarations</a>
RoHS Status	Yes (See CE Doc)
EU REACH	<a href="#">View EU REACH document</a>