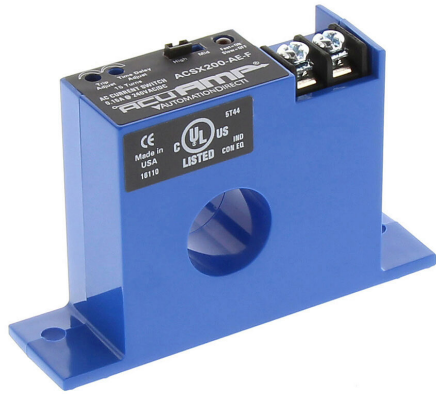


# ACSX200-AE-F Cut Sheet



AcuAMP AC current switch, fixed core, 1.5-12, 12-55, or 55-175A selectable sensing range, 1.5-175A adjustable trip point, 15-turn potentiometer, solid state switch, N.O., adjustable time delay output, 0.15A @ 240 VAC/VDC output rating.

For complete product information, please see this item on our store at the following link:



<https://www.automationdirect.com/pn/ACSX200-AE-F>

## Technical Specifications

<b>Brand</b>	AcuAMP
<b>Item</b>	AC Current switch
<b>Body Type</b>	Fixed core
<b>Sensing Range</b>	1.5-12, 12-55, or 55-175A selectable
<b>True RMS</b>	No
<b>Trip Point</b>	1.5-175A adjustable
<b>Trip Point Adjustment</b>	15-turn potentiometer
<b>Output</b>	Solid state switch, N.O., adjustable time delay
<b>Output Rating</b>	0.15A @ 240 VAC/VDC
<b>Operating Voltage</b>	Self powered
<b>Mounting</b>	Panel or optional 35mm DIN rail
<b>Electrical Connection</b>	Screw terminals
<b>UL Rating</b>	UL 508 listed

## Agency Approvals

<b>UL Listed File #</b>	E222847
<b>UL Recognized File #</b>	None
<b>UL Hazardous File #</b>	None
<b>CE</b>	<a href="#">View CE declarations</a>
<b>RoHS Status</b>	Yes (See CE Doc)
<b>EU REACH</b>	<a href="#">View EU REACH document</a>