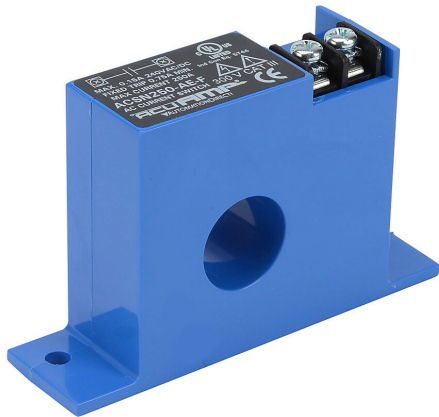


# ACSN250-AE-F Cut Sheet



AcuAMP AC current switch, fixed core, 0-250A sensing range, 0.75A non-adjustable trip point, solid state switch, N.O. output, 0.15A @ 240 VAC/VDC output rating.

For complete product information, please see this item on our store at the following link:



<https://www.automationdirect.com/pn/ACSN250-AE-F>

## Technical Specifications

<b>Brand</b>	AcuAMP
<b>Item</b>	AC Current switch
<b>Body Type</b>	Fixed core
<b>Sensing Range</b>	0-250A
<b>True RMS</b>	No
<b>Trip Point</b>	0.75A non-adjustable
<b>Output</b>	Solid state switch, N.O.
<b>Output Rating</b>	0.15A @ 240 VAC/VDC
<b>Operating Voltage</b>	Self powered
<b>Mounting</b>	Panel or optional 35mm DIN rail
<b>Electrical Connection</b>	Screw terminals
<b>UL Rating</b>	UL 508 listed

## Agency Approvals

<b>UL Listed File #</b>	E222847
<b>UL Recognized File #</b>	None
<b>UL Hazardous File #</b>	None
<b>CE</b>	<a href="#">View CE declarations</a>
<b>CSA File #</b>	None
<b>RoHS Status</b>	Yes (See CE Doc)
<b>EU REACH</b>	<a href="#">View EU REACH document</a>

## Dimensional Drawings



2D Drawing PDF Link:  
<https://cdn.automationdirect.com/static/drawings/ACSN250-AE-F.pdf>  
See store item page for other formats.