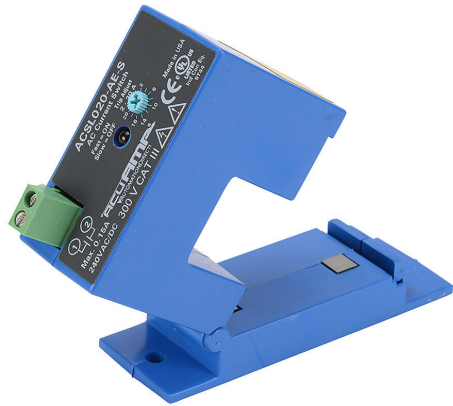


ACSL020-AE-S Cut Sheet



AcuAMP AC current switch, split core, 0-150A sensing range, 2-20A adjustable trip point, single-turn scaled potentiometer, solid state switch, N.O. output, 0.15A @ 240 VAC/VDC output rating.

For complete product information, please see this item on our store at the following link:



<https://www.automationdirect.com/pn/ACSL020-AE-S>

Technical Specifications

Brand	AcuAMP
Item	AC Current switch
Body Type	Split core
Sensing Range	0-150A
True RMS	No
Trip Point	2-20A adjustable
Trip Point Adjustment	Single-turn scaled potentiometer
Output	Solid state switch, N.O.
Output Rating	0.15A @ 240 VAC/VDC
Operating Voltage	Self powered
Mounting	Panel or optional 35mm DIN rail
Electrical Connection	Screw terminals
UL Rating	UL 508 listed

Agency Approvals

UL Listed File #	E222847
UL Recognized File #	None
UL Hazardous File #	None
CE	View CE declarations
CSA File #	None
RoHS Status	Yes (See CE Doc)
EU REACH	View EU REACH document

Dimensional Drawings



2D Drawing PDF Link:
<https://cdn.automationdirect.com/static/drawings/ACSL020-AE-S.pdf>
See store item page for other formats.