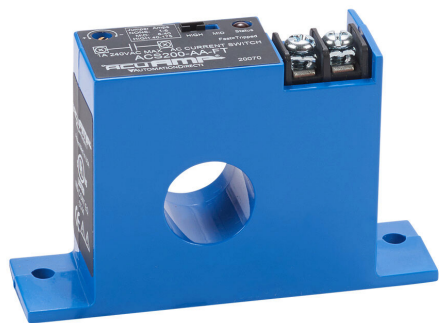


# ACS200-AA-FT Cut Sheet



AcuAMP AC current switch, fixed core, 1-6, 6-40, or 40-175A selectable sensing range, 1-175A adjustable trip point, 15-turn potentiometer, solid state switch, N.O. output, 1A @ 240 VAC output rating.

For complete product information, please see this item on our store at the following link:



<https://www.automationdirect.com/pn/ACS200-AA-FT>

## Technical Specifications

Brand	AcuAMP
Item	Current switch
Voltage Type	AC
Body Type	Fixed core
Sensing Range	1-6, 6-40, or 40-175A selectable
Trip Point	1-175A adjustable
Trip Point Adjustment	15-turn potentiometer
Output	Solid state switch, N.O.
Output Rating	1A @ 240 VAC
Operating Voltage	Self powered
Mounting	Panel or optional 35mm DIN rail
Electrical Connection	Screw terminals
UL Rating	UL 508 listed

## Agency Approvals

UL Listed File #	E222847
UL Recognized File #	None
UL Hazardous File #	None
CE	<a href="#">View CE declarations</a>
CSA File #	None
RoHS Status	Yes (See CE Doc)
EU REACH	<a href="#">View EU REACH document</a>

## Dimensional Drawings



2D Drawing PDF Link:  
<https://cdn.automationdirect.com/static/drawings/ACS200-AA-FT.pdf>  
See store item page for other formats.