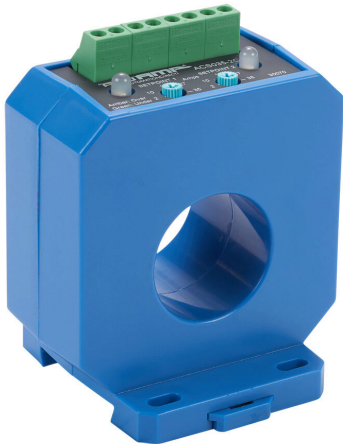


ACS035-2C-24-F Cut Sheet



AcuAMP AC current switch, fixed core, 2-35A sensing range, (2) 2-35A adjustable trip point, (2) single-turn potentiometers, (2) SPDT relays output, 1A @ 120 VAC, 2A @ 30 VDC output rating.

For complete product information, please see this item on our store at the following link:



<https://www.automationdirect.com/pn/ACS035-2C-24-F>

Technical Specifications

Brand	AcuAMP
Item	AC Current switch
Body Type	Fixed core
Sensing Range	2-35A
Trip Point	(2) 2-35A adjustable
Trip Point Adjustment	(2) single-turn potentiometers
Output	(2) SPDT relays
Output Rating	1A @ 120 VAC, 2A @ 30 VDC
Operating Voltage	24 VAC/VDC
Mounting	Panel or 35mm DIN rail
Electrical Connection	Screw terminals
UL Rating	UL 508 listed

Agency Approvals

UL Listed File #	E222847
UL Recognized File #	None
UL Hazardous File #	None
CE	View CE declarations
CSA File #	None
RoHS Status	Yes (See CE Doc)
EU REACH	View EU REACH document