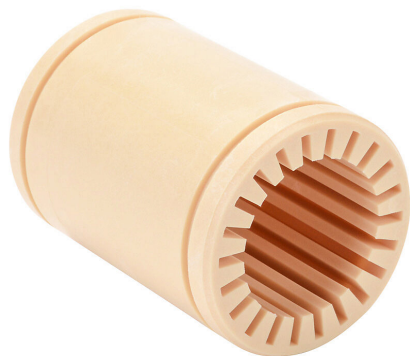


A-RJI-01-16 Cut Sheet



igus drylin R series plain bearing, type J polymer bearing, 1in inside diameter, 2-1/4in overall length, fixed housing, closed, type J polymer.

For complete product information, please see this item on our store at the following link:



<https://www.automationdirect.com/pn/A-RJI-01-16>

Technical Specifications

Brand	igus
Item	Plain bearing
Series	Drylin R
Bearing Material	Type J polymer
Bearing Inside Diameter	1in
Overall Length	2-1/4in
Housing Fit	Fixed
Housing Type	Closed
Housing Material	Type J polymer
Housing Outside Diameter	1-9/16in
Flanged	No

Agency Approvals

CE	View CE declarations
RoHS Status	Yes (See CE Doc)
EU REACH	View EU REACH document