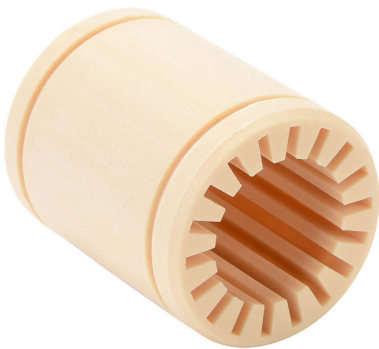


A-RJI-01-12 Cut Sheet



igus drylin R series plain bearing, type J polymer bearing, 3/4in inside diameter, 1-5/8in overall length, fixed housing, closed, type J polymer.

For complete product information, please see this item on our store at the following link:



<https://www.automationdirect.com/pn/A-RJI-01-12>

Technical Specifications

Brand	igus
Item	Plain bearing
Series	Drylin R
Bearing Material	Type J polymer
Bearing Inside Diameter	3/4in
Overall Length	1-5/8in
Housing Fit	Fixed
Housing Type	Closed
Housing Material	Type J polymer
Housing Outside Diameter	1-1/4in
Flanged	No

Agency Approvals

CE	View CE declarations
RoHS Status	Yes (See CE Doc)
EU REACH	View EU REACH document

Dimensional Drawings



2D Drawing PDF Link:
<https://cdn.automationdirect.com/static/drawings/A-RJI-01-12.pdf>
See store item page for other formats.