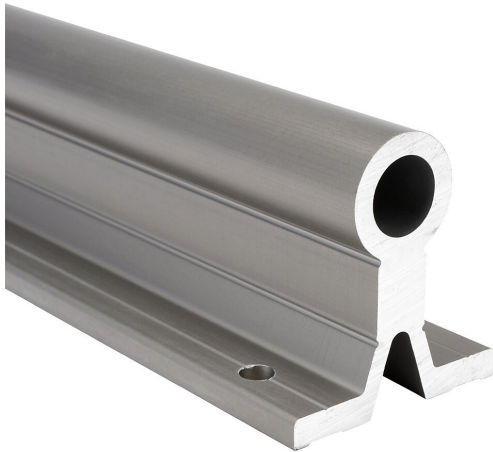


A-AWUI-16-1000 Cut Sheet



igus drylin R series supported shaft, 6060/6061 aluminum, 450-550 HV, hard-anodized aluminum, 1in diameter, 1000mm length. For use with 1in drylin R series bearings.

For complete product information, please see this item on our store at the following link:



<https://www.automationdirect.com/pn/A-AWUI-16-1000>

Technical Specifications

| | |
|-----------------------|------------------------------|
| Brand | igus |
| Item | Shaft |
| Series | Drylin R |
| Shaft Type | Supported |
| Material | 6060/6061 aluminum |
| Hardness | 450-550 HV |
| Surface Finish | Hard-anodized aluminum |
| Diameter | 1in |
| Length | 1000mm |
| For Use With | 1in drylin R series bearings |

Agency Approvals

| | |
|--------------------|--|
| CE | View CE declarations |
| RoHS Status | Yes (See CE Doc) |
| EU REACH | View EU REACH document |