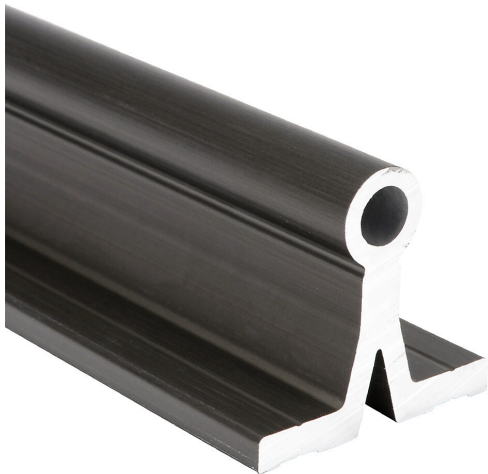


A-AWUI-08-250 Cut Sheet



igus drylin R series supported shaft, 6060/6061 aluminum, 450-550 HV, hard-anodized aluminum, 1/2in diameter, 250mm length. For use with 1/2in drylin R series bearings.

For complete product information, please see this item on our store at the following link:



<https://www.automationdirect.com/pn/A-AWUI-08-250>

Technical Specifications

Brand	igus
Item	Shaft
Series	Drylin R
Shaft Type	Supported
Material	6060/6061 aluminum
Hardness	450-550 HV
Surface Finish	Hard-anodized aluminum
Diameter	1/2in
Length	250mm
For Use With	1/2in drylin R series bearings

Agency Approvals

CE	View CE declarations
RoHS Status	Yes (See CE Doc)
EU REACH	View EU REACH document

Dimensional Drawings



2D Drawing PDF Link:
<https://cdn.automationdirect.com/static/drawings/A-AWUI-08-250.pdf>
See store item page for other formats.