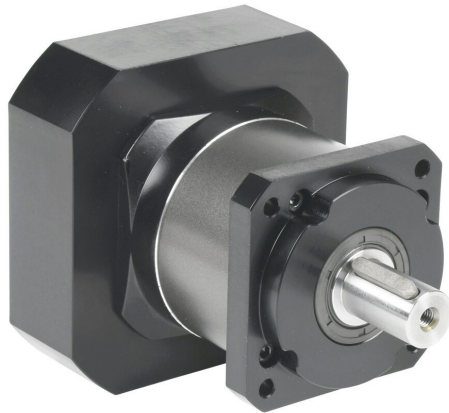


96200373 Cut Sheet



LS Electric high-precision planetary gearbox, 5:1 ratio, inline, 22mm diameter output shaft, nominal output torque 160 N-m (1416 lb-in), 1-stage, 90mm frame. For use with APM-FE series 900W and 1.5 kW motors.

For complete product information, please see this item on our store at the following link:



<https://www.automationdirect.com/pn/96200373>

Technical Specifications

Brand	LS Electric
Item	Gearbox
Application	High-precision
Gearbox Type	Planetary
Gear Ratio	5:1
Output Configuration	Inline
Gearbox Output Shaft Diameter	22mm
Nominal Output Torque	Nominal output torque 160 N-m (1416 lb-in)
Number of Stages	1
Frame	90mm
For Use With	APM-FE series 900W and 1.5 kW motors
Includes	Input adapter bushing, motor mounting hardware and output shaft key
Manufacturer Part Number	MSS0901A-005KS-C4120103C19

Agency Approvals

UL Listed File #	None
UL Recognized File #	None
UL Hazardous File #	None
CE	None
CSA File #	None
RoHS Status	Meets RoHS Chemical Restrictions - No CE (See RoHS Statement Below)
EU REACH	View EU REACH document
Other	RoHS Statement