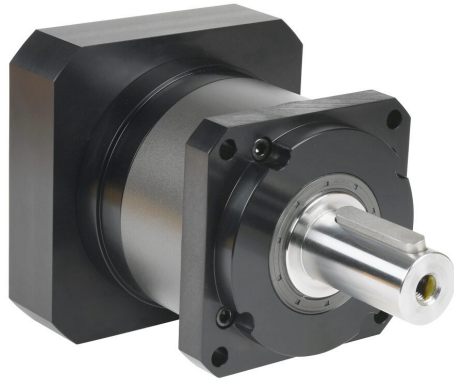


# 96200013 Cut Sheet



LS Electric high-precision planetary gearbox, 5:1 ratio, inline, 40mm diameter output shaft, nominal output torque 634 N-m (5612 lb-in), 1-stage, 142mm frame. For use with APM-FF series 3.5 kW and 5.5 kW motors.

For complete product information, please see this item on our store at the following link:



<https://www.automationdirect.com/pn/96200013>

## Technical Specifications

<b>Brand</b>	LS Electric
<b>Item</b>	Gearbox
<b>Application</b>	High-precision
<b>Gearbox Type</b>	Planetary
<b>Gear Ratio</b>	5:1
<b>Output Configuration</b>	Inline
<b>Gearbox Output Shaft Diameter</b>	40mm

<b>Nominal Output Torque</b>	Nominal output torque 634 N-m (5612 lb-in)
<b>Number of Stages</b>	1
<b>Frame</b>	142mm
<b>For Use With</b>	APM-FF series 3.5 kW and 5.5 kW motors
<b>Includes</b>	Input adapter bushing, motor mounting hardware and output shaft key
<b>Manufacturer Part Number</b>	MSS1421A-005KS-E3110103C35

## Agency Approvals

<b>UL Listed File #</b>	None
<b>UL Recognized File #</b>	None
<b>UL Hazardous File #</b>	None
<b>CE</b>	None
<b>CSA File #</b>	None
<b>RoHS Status</b>	Meets RoHS Chemical Restrictions - No CE (See RoHS Statement Below)
<b>EU REACH</b>	<a href="#">View EU REACH document</a>
<b>Other</b>	RoHS Statement

## Dimensional Drawings



2D Drawing PDF Link:  
<https://cdn.automationdirect.com/static/drawings/2d/96200013.pdf>  
See store item page for other formats.