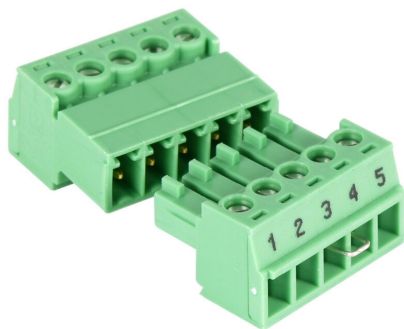


9194-50-01 Cut Sheet



STAHL pac-Bus end terminal set, for use with 9294-31-12 and 9194-31-17 pac-Bus terminals.

For complete product information, please see this item on our store at the following link:



<https://www.automationdirect.com/pn/9194-50-01>

Technical Specifications

Brand	STAHL
Item	Pac-Bus end terminal set
For Use With	9294-31-12 and 9194-31-17 pac-Bus terminals
Includes	Male and female caps
Additional Information	Manufacturer part number: 9194/50-01

Agency Approvals

UL Listed File #	None
UL Recognized File #	None
UL Hazardous File #	None
CE	View CE declarations
CSA File #	None
RoHS Status	Yes (See CE Doc)
EU REACH	View EU REACH document