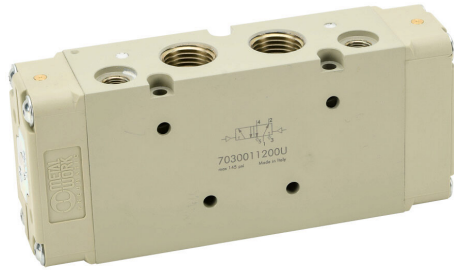


7030011200U Cut Sheet



Metal Work pilot valve, 5-port (4-way), 2-position, double air pilot, 1/2in female NPT inlet(s), 1/2in female NPT outlet(s), 1/2in female NPT exhaust(s), 1/8in female NPT pilot(s), Cv=4.6.

For complete product information, please see this item on our store at the following link:



<https://www.automationdirect.com/pn/7030011200U>

Technical Specifications

Brand	Metal Work
Series	Series 70
Item	Valve
Working Fluid	Air
Valve Type	Pilot directional control
Port Quantity	5-port (4-way)
Number Of Positions	2
Action	Double air pilot
Body Material	Aluminum
Body Width	40mm

Inlet Port	1/2in female NPT
Outlet Port	1/2in female NPT
Exhaust Port	1/2in female NPT
Pilot Port	1/8in female NPT
Flow Coefficient	4.6
Maximum Operating Pressure	145 psi (10 bar)
Minimum Operating Pressure	Vacuum

Agency Approvals

UL Listed File #	None
UL Recognized File #	None
UL Hazardous File #	None
CSA File #	None
RoHS Status	No
EU REACH	View EU REACH document

Dimensional Drawings



2D Drawing PDF Link:
<https://cdn.automationdirect.com/static/drawings/2d/7030011200U.pdf>
See store item page for other formats.