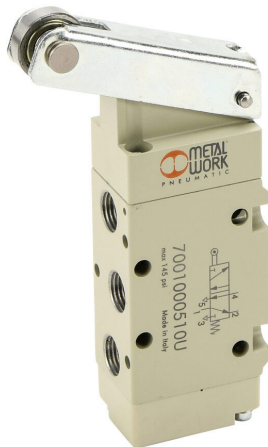


7001000510U Cut Sheet



Metal Work pneumatic mechanically operated directional control valve, 5-port (4-way), 2-position, roller lever, spring return, 1/8in female NPT inlet(s), 1/8in female NPT outlet(s), 1/8in female NPT exhaust(s), Cv=0.55.

For complete product information, please see this item on our store at the following link:



<https://www.automationdirect.com/pn/7001000510U>

Technical Specifications

Brand	Metal Work
Item	Valve
Working Fluid	Air or inert gas
Valve Type	Mechanically operated directional control
Series	Series 70
Port Quantity	5-port (4-way)
Number Of Positions	2
Operator Type	Roller lever
Action	Spring return
Body Material	Aluminum

Body Width	22mm
Inlet Port	1/8in female NPT
Outlet Port	1/8in female NPT
Exhaust Port	1/8in female NPT
Flow Coefficient	0.55
Maximum Operating Pressure	145 psi (10 bar)
Minimum Operating Pressure	Vacuum

Agency Approvals

UL Listed File #	None
UL Recognized File #	None
UL Hazardous File #	None
CSA File #	None
RoHS Status	No
EU REACH	View EU REACH document

Dimensional Drawings



2D Drawing PDF Link:
<https://cdn.automationdirect.com/static/drawings/2d/7001000510U.pdf>
See store item page for other formats.