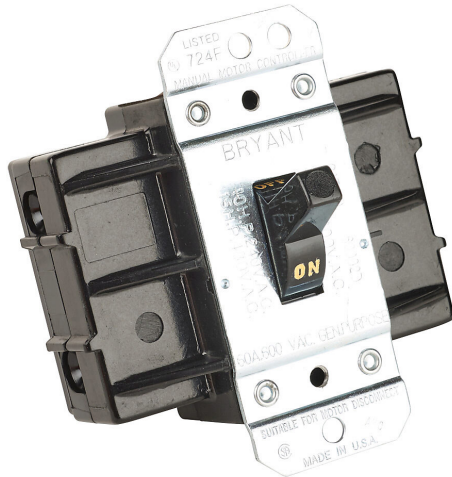


# 60002D Cut Sheet



Bryant manual motor controller, open, 60A, 600 VAC, 2-pole, 20hp, UL 508 rated.

For complete product information, please see this item on our store at the following link:



<https://www.automationdirect.com/pn/60002D>

## Technical Specifications

<b>Brand</b>	Bryant
<b>Item</b>	Manual motor controller
<b>Body Type</b>	Open
<b>Amperage Rating</b>	60A
<b>Voltage Rating</b>	600 VAC
<b>Number of Poles</b>	2
<b>Horsepower Rating</b>	20hp
<b>Wiring Type</b>	Can be wired from the back only
<b>UL Rating</b>	UL 508 rated
<b>Additional Information</b>	Suitable as motor disconnect

## Agency Approvals

<b>UL Listed File #</b>	E70402
<b>UL Recognized File #</b>	None
<b>UL Hazardous File #</b>	None
<b>CE</b>	None
<b>CSA File #</b>	46186
<b>RoHS Status</b>	No
<b>EU REACH</b>	<a href="#">View EU REACH document</a>