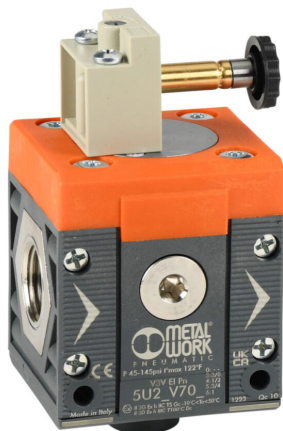


5U24V704 Cut Sheet



Metal Work shut-off valve, 3-port (3-way), 2-position, single solenoid spring return, N.C., 1/2in female NPT inlet(s), 1/2in female NPT outlet(s), G1/4 female BSPP exhaust(s), Cv=4.4. For use with Syntesi Size 2 air prep components.

For complete product information, please see this item on our store at the following link:



<https://www.automationdirect.com/pn/5U24V704>

Technical Specifications

Brand	Metal Work
Series	Syntesi Size 2
Item	Valve
Working Fluid	Air
Valve Type	Shut-off
Action	Single solenoid spring return
Manual Override Type	Locking
Port Quantity	3-port (3-way)
Number Of Positions	2
Valve Configuration	N.C.
Inlet Port	1/2in female NPT
Outlet Port	1/2in female NPT
Exhaust Port	G1/4 female BSPP
Flow Coefficient	4.4
For Use With	Syntesi Size 2 air prep components
Additional Information	Purchase solenoid coil in desired voltage separately. (2) plugged G1/4 female BSPP outlet ports

Agency Approvals

UL Listed File #	None
UL Recognized File #	None
UL Hazardous File #	None
CE	View CE declarations
CSA File #	None
RoHS Status	Yes (See CE Doc)
EU REACH	View EU REACH document