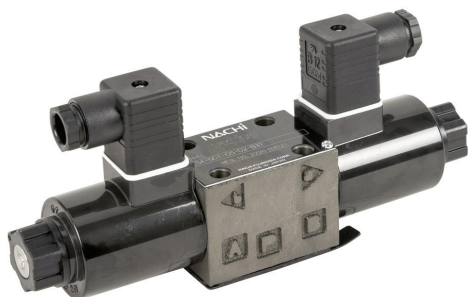


# 50020852089314 Cut Sheet



Bucher solenoid valve, D03, 4-port (4-way), 3-position, center closed, double solenoid, cast iron body, momentary manual override, Cv=26.4, 24 VDC.

For complete product information, please see this item on our store at the following link:



<https://www.automationdirect.com/pn/50020852089314>

## Technical Specifications

<b>Brand</b>	Bucher
<b>Item</b>	Valve
<b>Working Fluid</b>	Petroleum based hydraulic fluid
<b>Valve Type</b>	Solenoid directional control
<b>Port Quantity</b>	4-port (4-way)
<b>Number Of Positions</b>	3
<b>Valve Configuration</b>	Center closed
<b>Action</b>	Double solenoid
<b>Body Material</b>	Cast iron
<b>Manual Override Type</b>	Momentary

<b>Flow Coefficient</b>	26.4
<b>Maximum Operating Pressure</b>	5075 psi
<b>Minimum Operating Pressure</b>	0 psi
<b>Operating Voltage</b>	24 VDC
<b>Power Rating</b>	26W
<b>Electrical Connection</b>	18mm DIN style wiring plug
<b>Form Factor</b>	D03
<b>Includes</b>	Mounting hardware

## Agency Approvals

<b>RoHS Status</b>	No
<b>EU REACH</b>	<a href="#">View EU REACH document</a>

## Dimensional Drawings



2D Drawing PDF Link:  
<https://cdn.automationdirect.com/static/drawings/2d/50020852089314.pdf>  
See store item page for other formats.