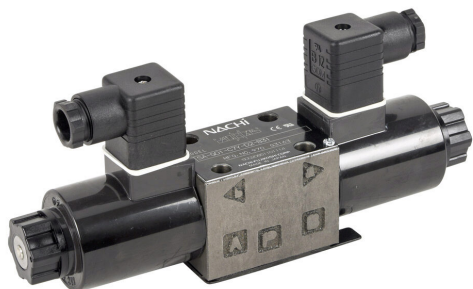


50020851101114 Cut Sheet



Bucher solenoid valve, D03, 4-port (4-way), 3-position, center tandem, double solenoid, cast iron body, momentary manual override, Cv=13.2, 24 VDC.

For complete product information, please see this item on our store at the following link:



<https://www.automationdirect.com/pn/50020851101114>

Technical Specifications

Brand	Bucher
Item	Valve
Working Fluid	Petroleum based hydraulic fluid
Valve Type	Solenoid directional control
Port Quantity	4-port (4-way)
Number Of Positions	3
Valve Configuration	Center tandem
Action	Double solenoid
Body Material	Cast iron
Manual Override Type	Momentary

Flow Coefficient	13.2
Maximum Operating Pressure	5075 psi
Minimum Operating Pressure	0 psi
Operating Voltage	24 VDC
Power Rating	26W
Electrical Connection	18mm DIN style wiring plug
Form Factor	D03
Includes	Mounting hardware

Agency Approvals

RoHS Status	No
EU REACH	View EU REACH document

Dimensional Drawings



2D Drawing PDF Link:
<https://cdn.automationdirect.com/static/drawings/2d/50020851101114.pdf>
See store item page for other formats.