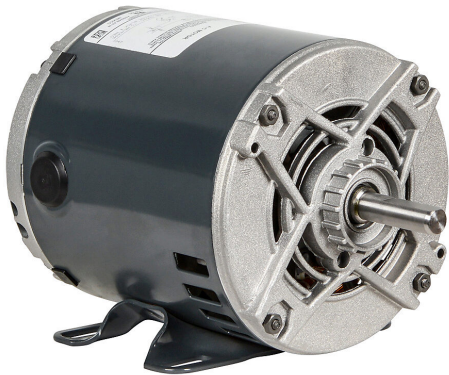


# 4354 Cut Sheet



Marathon standard efficiency AC induction motor, general purpose, 1/4hp, 1-phase, 115 VAC, 1800rpm, ODP, NEMA 48 frame, rolled steel, rigid base mount.

For complete product information, please see this item on our store at the following link:



<https://www.automationdirect.com/pn/4354>

## Technical Specifications

Brand	Marathon
Item	Motor
Efficiency Group	Standard efficiency
Efficiency	57.5
Voltage Type	AC
Motor Type	Induction
Motor Application	General purpose
Horsepower Rating	1/4hp
Number of Phases	1
Voltage Rating	115 VAC
Synchronous Speed	1800rpm
Nameplate RPM	1725rpm
Overload Type	None
Enclosure Type	ODP

Shaft Type	Round with square key
Shaft Diameter	1/2in
Shaft Material	1117 steel
Motor Frame	NEMA 48
Frame Material	Rolled steel
Electrically Reversible	Yes
Insulation Class	Class B
IP Rating	IP22
Service Factor	1.35
Integrated Brake	No
Junction Box Orientation	F1
Mounting	Rigid base
Mounting Orientation	Any
Manufacturer Part Number	5KH39QN9538

## Agency Approvals

UL Listed File #	None
UL Recognized File #	E46035
UL Hazardous File #	None
CE	None
CSA File #	236833
RoHS Status	No
EU REACH	<a href="#">View EU REACH document</a>

## Dimensional Drawings



2D Drawing PDF Link:  
<https://cdn.automationdirect.com/static/drawings/4354.pdf>  
See store item page for other formats.