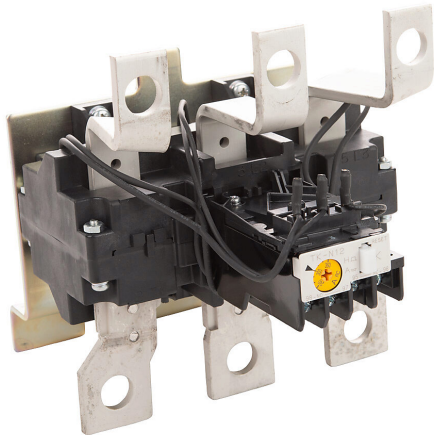


# 3NK5HS Cut Sheet



Fuji Electric thermal overload relay, 240.0-360.0A adjustable, bi-metallic, direct mount power connection(s), panel mount. For use with 3NC5Hx contactors.

For complete product information, please see this item on our store at the following link:



<https://www.automationdirect.com/pn/3NK5HS>

## Technical Specifications

|                                 |                         |
|---------------------------------|-------------------------|
| <b>Brand</b>                    | Fuji Electric           |
| <b>Item</b>                     | Relay                   |
| <b>Relay Type</b>               | Thermal overload        |
| <b>Full Load Amperage Range</b> | 240.0-360.0A adjustable |
| <b>Operation Type</b>           | Bi-metallic             |
| <b>Auxiliary Contacts</b>       | (1) N.O./ (1) N.C.      |
| <b>Trip Class</b>               | Trip Class 20           |
| <b>Phase Loss Sensitive</b>     | Yes                     |
| <b>Connection</b>               | Direct mount power      |
| <b>Mounting</b>                 | Panel                   |
| <b>For Use With</b>             | 3NC5Hx contactors       |

## Agency Approvals

|                             |  |
|-----------------------------|--|
| <b>UL Listed File #</b>     | E42419                                 |
| <b>UL Recognized File #</b> | None                                   |
| <b>UL Hazardous File #</b>  | None                                   |
| <b>CE</b>                   | <a href="#">View CE declarations</a>   |
| <b>RoHS Status</b>          | Yes (See CE Doc)                       |
| <b>EU REACH</b>             | <a href="#">View EU REACH document</a> |