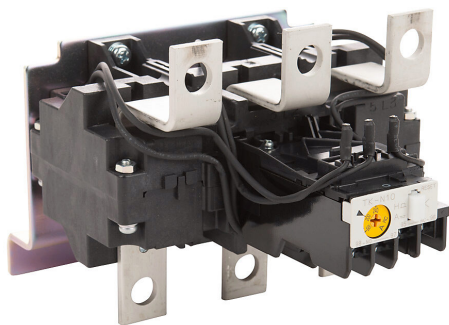


3NK4HQ Cut Sheet



Fuji Electric 3NK4 series thermal overload relay, 160.0-240.0A adjustable, bi-metallic, direct mount power connection(s), panel mount. For use with 3NC4Hx contactors.

For complete product information, please see this item on our store at the following link:



<https://www.automationdirect.com/pn/3NK4HQ>

Technical Specifications

Brand	Fuji Electric
Item	Relay
Series	3NK4
Relay Type	Thermal overload
Full Load Amperage Range	160.0-240.0A adjustable
Operation Type	Bi-metallic
Auxiliary Contacts	(1) N.O. / (1) N.C.
Trip Class	Trip Class 20
Phase Loss Sensitive	Yes
Connection	Direct mount power
Mounting	Panel
For Use With	3NC4Hx contactors

Agency Approvals

UL Listed File #	E42419
UL Recognized File #	None
UL Hazardous File #	None
CE	View CE declarations
RoHS Status	Yes (See CE Doc)
EU REACH	View EU REACH document