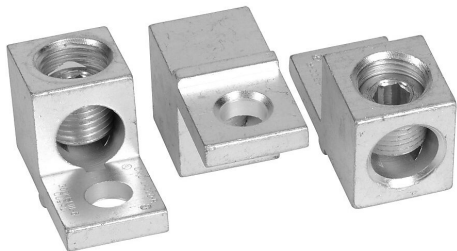


39543020 Cut Sheet



Socomec box type wiring lug, line or load mount, 1 openings, #6 AWG-300 MCM wire(s). Package of 3. For use with SIRCO and SIRCO DC 100-250A switch bodies.

For complete product information, please see this item on our store at the following link:



<https://www.automationdirect.com/pn/39543020>

Technical Specifications

Brand	Socomec
Item	Wiring lug
Lug Type	Box type
Mounting	Line or load
Number Of Openings	1
Conductor Size	#6 AWG-300 MCM wire(s)
Material	6061-T6 aluminum alloy
Quantity per Pack	3
For Use With	SIRCO and SIRCO DC 100-250A switch bodies

Agency Approvals

UL Listed File #	E26130
UL Recognized File #	None
UL Hazardous File #	None
CE	View CE declarations
CSA File #	None
RoHS Status	Yes (See CE Doc)
EU REACH	View EU REACH document

Dimensional Drawings



2D Drawing PDF Link:
<https://cdn.automationdirect.com/static/drawings/39543020.pdf>
See store item page for other formats.